

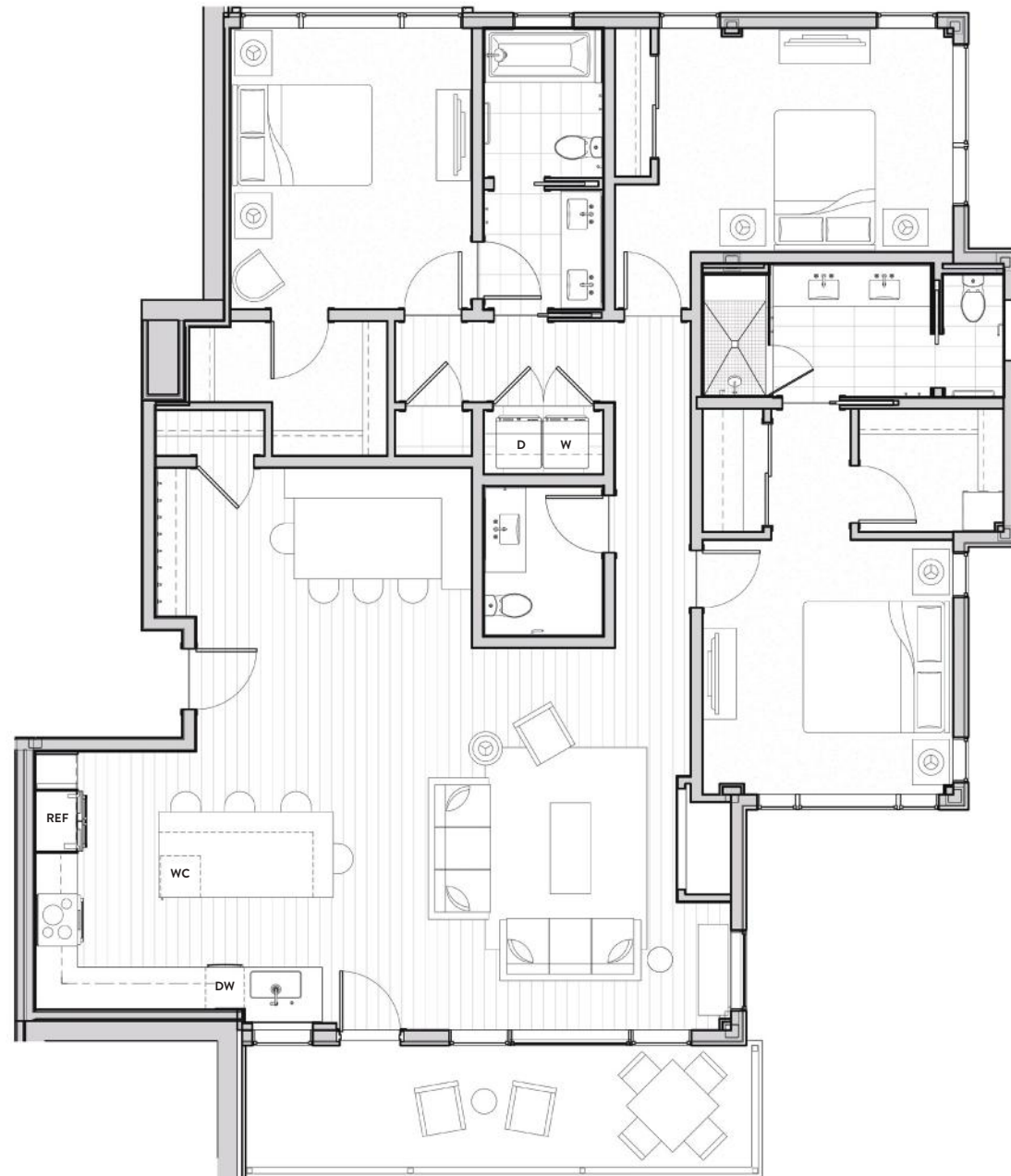
RESIDENCE

300

1,958 SQ. FT.

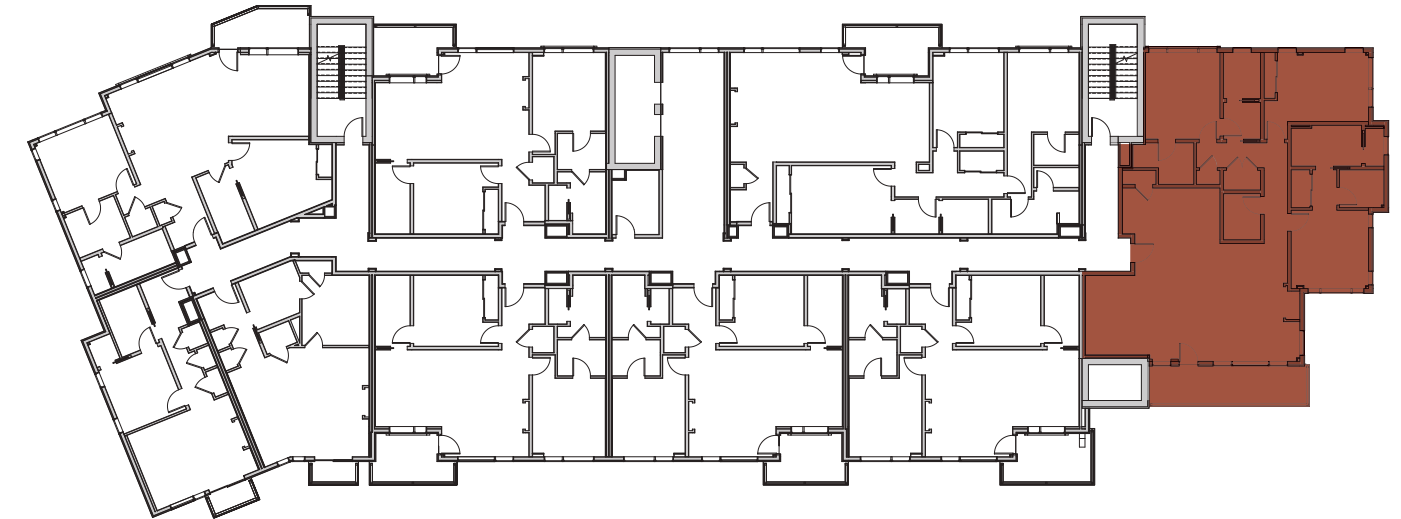
3 BR / 2.5 BA

NORTH FACING



SOUTH FACING

THIRD FLOOR



SOUTH ELEVATION



FOR MORE INFORMATION CONTACT YOUR LOCAL BROKER,
call Molly Griffin at 970.331.9676 or visit our showroom in the Westin lobby.

LISTING COURTESY OF SLIFER SMITH & FRAMPTON REAL ESTATE east west partners



IMPORTANT NOTICE The information, designs, dimensions, finishes, prices and other elements or features contained in these materials cannot be relied upon as accurate and are subject to change without notice. Any square-footage measurements indicated herein are approximate only. Square-footage calculations may be made in a variety of manners, and different methods may yield different results. Furnishings, floor plans, sketches, renderings and other depictions shown herein are for illustrative purposes only and shall not constitute an agreement or commitment on the part of Seller to include any such items in the sale or to deliver the residence in accordance with such illustrations. Interested buyers are advised to inspect the plans and specifications to determine the actual features, dimensions and square footages and to consult with Seller as to other elements important to the purchase. In addition, pursuant to the terms of the Purchase Contract, Seller has reserved certain rights to modify elements of the residence and sale. Interested buyers are advised to consult the specific terms of the Purchase Contract. One Riverfront is developed by EW Riverfront East Investor, LLC. These materials shall not constitute an offer or solicitation in any state where prior registration is required. Void where prohibited by law. EQUAL HOUSING OPPORTUNITY. 